



MaxACD Release 7.1

System Center Configuration Manager Client Remote Deployment Guide

Introduction

System Center Configuration Manager (SCCM) is a systems management software product available from Microsoft. It helps administrators manage large groups of computers running versions of Windows operating systems.

This document explains how perform remote deployment of the MaxACD 7.0 clients (specifically, MaxAgent, MaxSupervisor, and MaxInSight). These instructions assume that you are familiar with using SCCM to deploy applications within your environment.

Requirements

- SCCM 2012 R2
- A SQL database

Step 1: SCCM Preparation

Detailed instructions for these steps can be found on the Microsoft Technet site at (<https://social.technet.microsoft.com/search/en-US>).

1. Prepare Active Directory for the Configuration Manager.
 - a. Create the System Management Container in Active Directory.
 - b. Extend the schema.
2. Install the following components on the server:
 - a. BITS
 - b. Remote Differential Compression
 - c. IIS components – Common HTTP Features
 - Static Content
 - Default Document

- Directory Browsing
 - HTTP Errors
 - HTTP Redirection
 - d. IIS components – Application Development
 - ASP.NET
 - .NET Extensibility
 - ASP
 - ISAPI Extensions
 - ISAPI Filters
 - e. IIS components – Health and Diagnostics
 - HTTP logging
 - Logging tools
 - Request Monitor
 - Tracing
 - f. IIS components – Security
 - Basic Authentication
 - Windows Authentication
 - URL Authorization
 - Request Filtering
 - IP and Domain Restrictions
 - g. IIS components – Performance
 - Static Content Compression
 - h. IIS components – Management Tools
 - IIS Management Console
 - IIS Management Scripts and Tools
 - Management Service
 - i. IIS components – IIS 6 Management Compatibility
 - IIS 6 Metabase Compatibility
 - IIS 6 WMI Compatibility
 - IIS 6 Scripting Tools
 - IIS 6 Management Console
 - j. .NET 3.5
3. Install the Windows Assessment and Deployment Kit (Windows ADK) if the server is running Windows 8.1
 - a. Download the kit from [https://www.microsoft.com/en-gb/download/details.aspx?id=39982&tduid=\(03fa2223e274ca484196b9ba9eb7e2dd\)\(256380\)\(2459594\)\(TnL5HPStwNw-vSLEcZ5hnT2DOTMc9fWSbg\)\(\)](https://www.microsoft.com/en-gb/download/details.aspx?id=39982&tduid=(03fa2223e274ca484196b9ba9eb7e2dd)(256380)(2459594)(TnL5HPStwNw-vSLEcZ5hnT2DOTMc9fWSbg)())
 - b. Run the downloaded file. When the process has completed, restart the system.
 4. Install SQL Server.
 5. Install SCCM 2012 R2.

Step 2: Deploy MaxAgent

1. In SCCM, create a new application: choose **Application Management > Applications** and select **Create Application**.

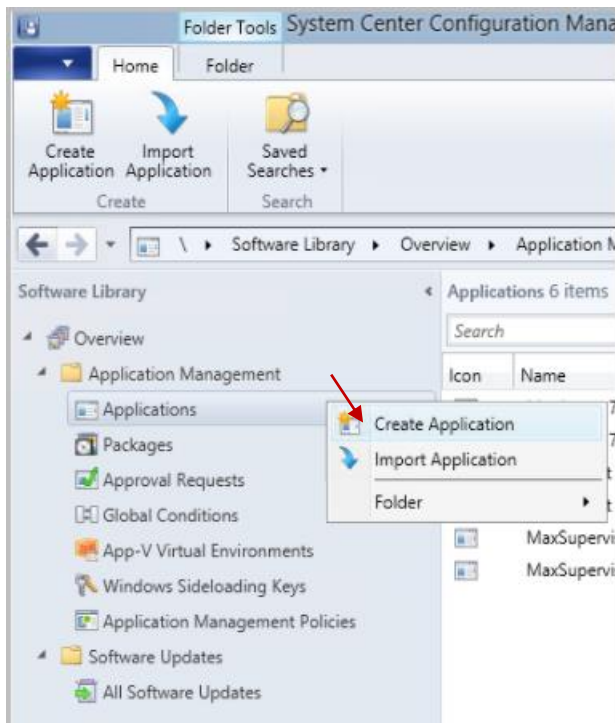


Figure 1: Create a new application

2. In the next panel, choose **Automatically detect information about this application from installation files** and specify the path of the MaxAgent 7.1 for MaxACD.msi. On the MaxACD installation media, the .msi files are stored in the *MaxACD Application* folder, under each client's subfolder. Click **Next**.

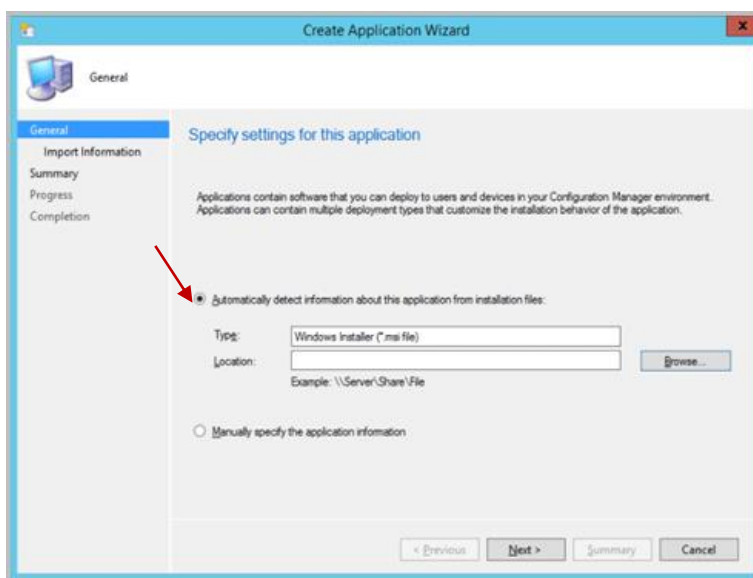


Figure 2: Specify the path to the MaxAgent 7.1 .msi file

3. When prompted about verification, click **Yes** to continue.

A summary page will show you the details of the application.

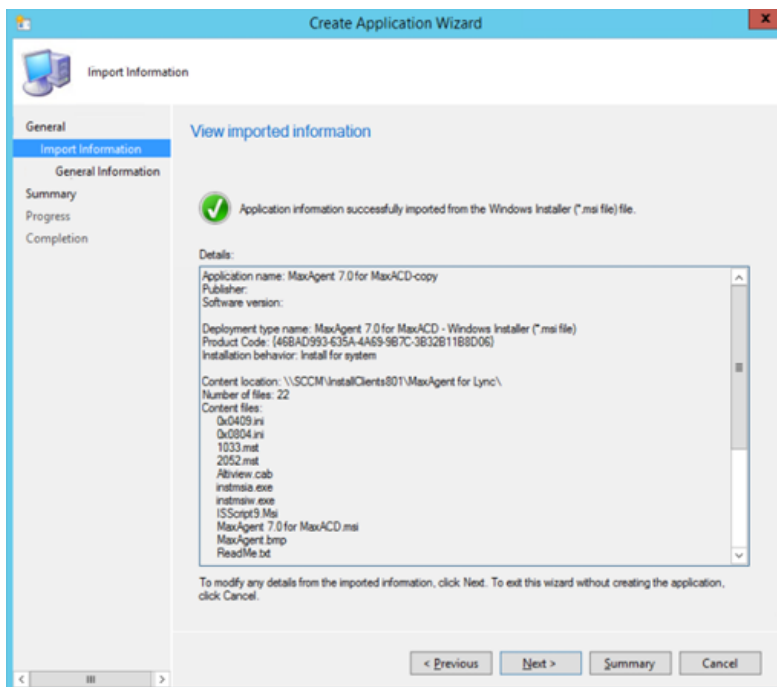


Figure 3: The Summary page

4. Click **Next**.
5. You can add details about the application on the *General Information* panel of the wizard.
 - Use “msiexec /i "MaxAgent 7.1 for MaxACD.msi" /q” as the command of Installation program.

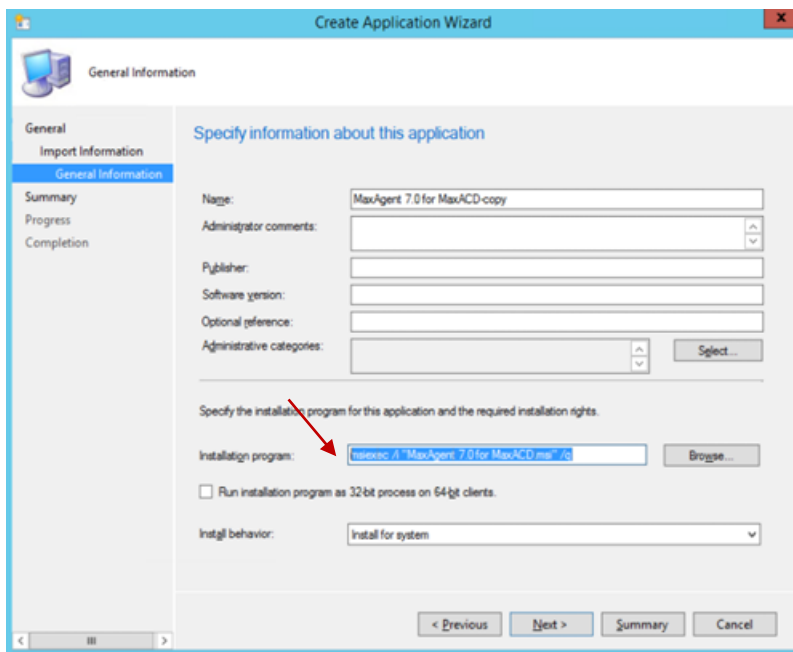


Figure 4: The General Information panel

6. Click **Next**. Continue through the remaining panels to finish creating the application.
7. Right-click the application that you just created. From the menu, click **Deploy**.

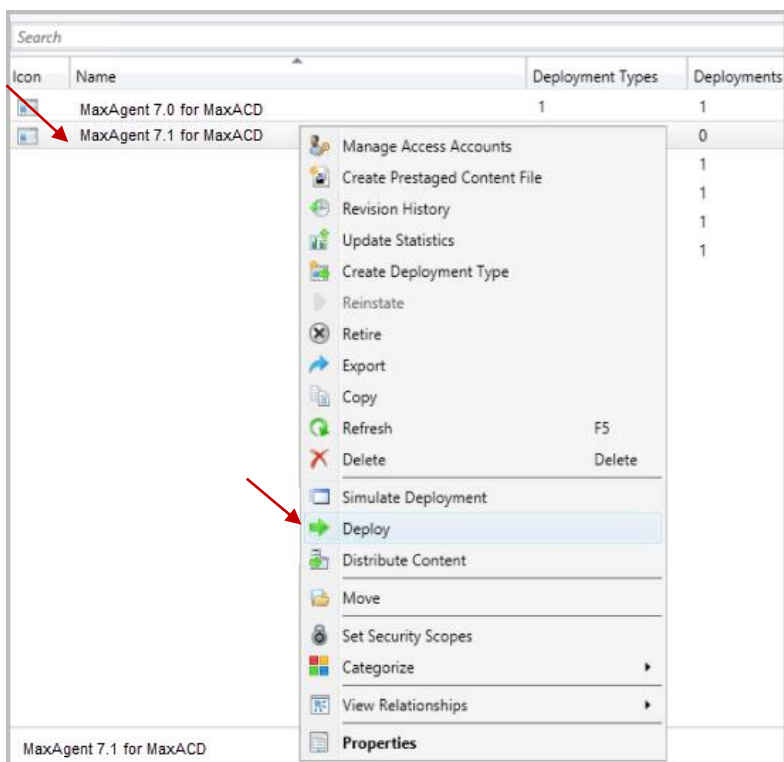


Figure 5: Select the application and click Deploy

8. In the *General* panel, beside the *Collection* field, click **Browse** and choose the users or computers where you want to install MaxAgent or another client. Click **Next**.

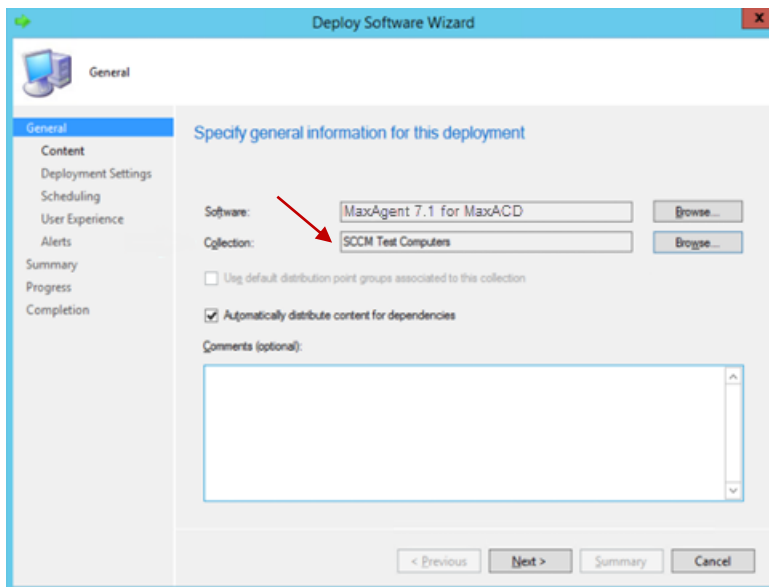


Figure 6: Choose the computers where you want to install the client application

9. Click **Add** and choose **Distribution Point**.

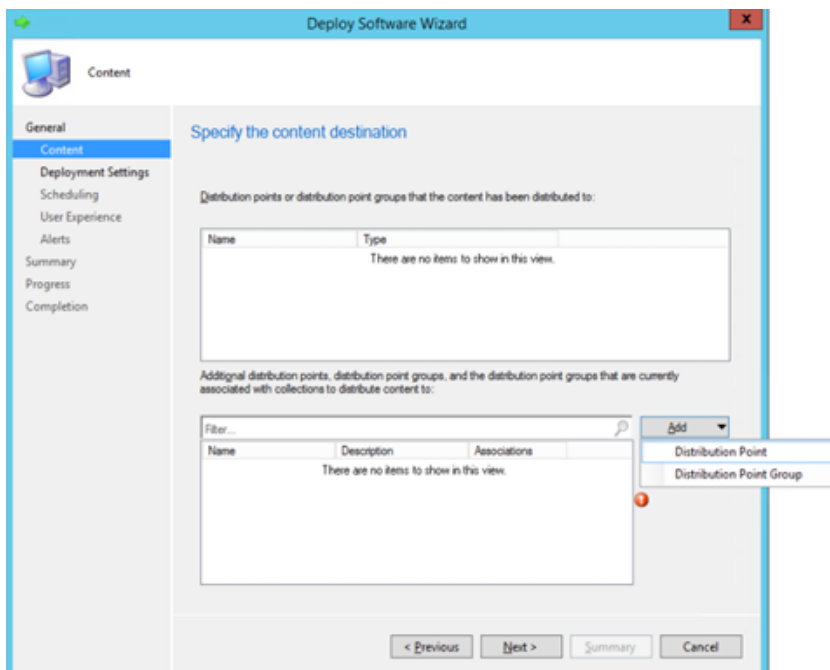


Figure 7: Add a distribution point

10. Select the SCCM server itself as the distribution point. Click **OK**.

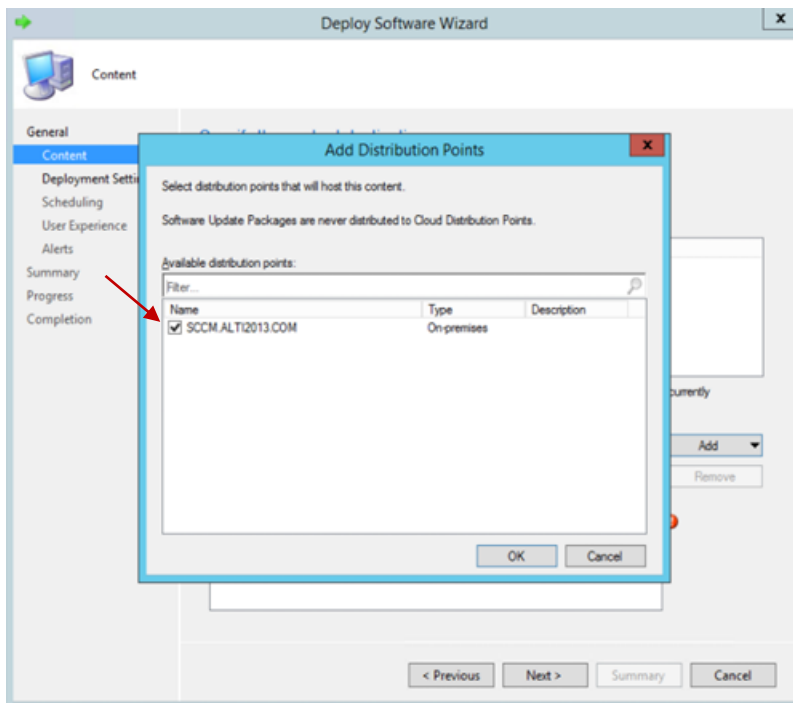


Figure 8: Choose the SCCM server as the Distribution point

11. In the *Deployment Settings* panel, select **Install** as the action and set **Required** as the purpose. Click **Next**.

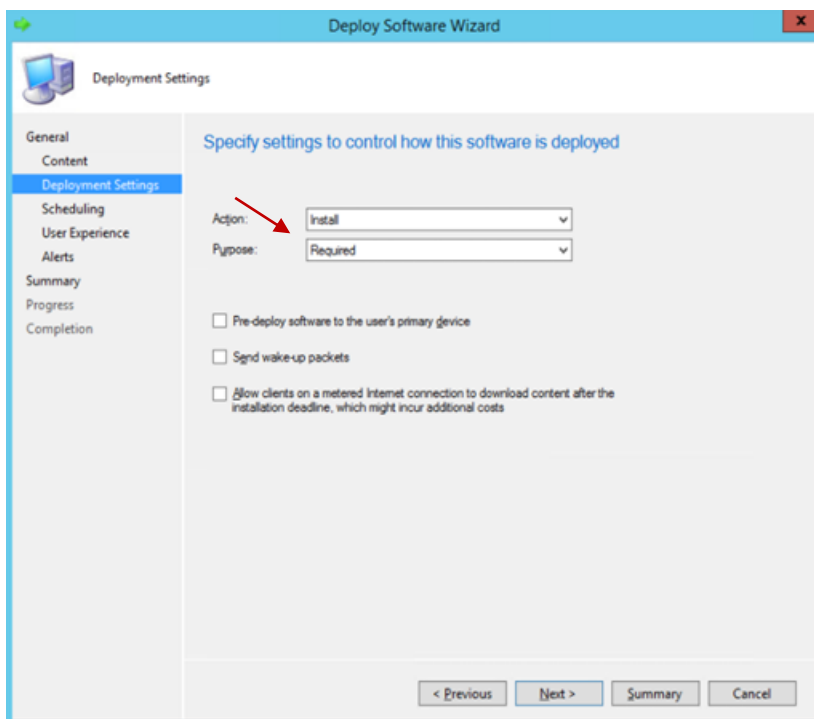


Figure 9: Select Install

12. In the *Scheduling* panel, for the *Installation Deadline* option, choose **As soon as possible after the available time** for the fastest installation of MaxAgent or another client. Users can also schedule off work hours for the deployment. Click **Next** and complete the remaining steps in the wizard to complete the deployment configuration.

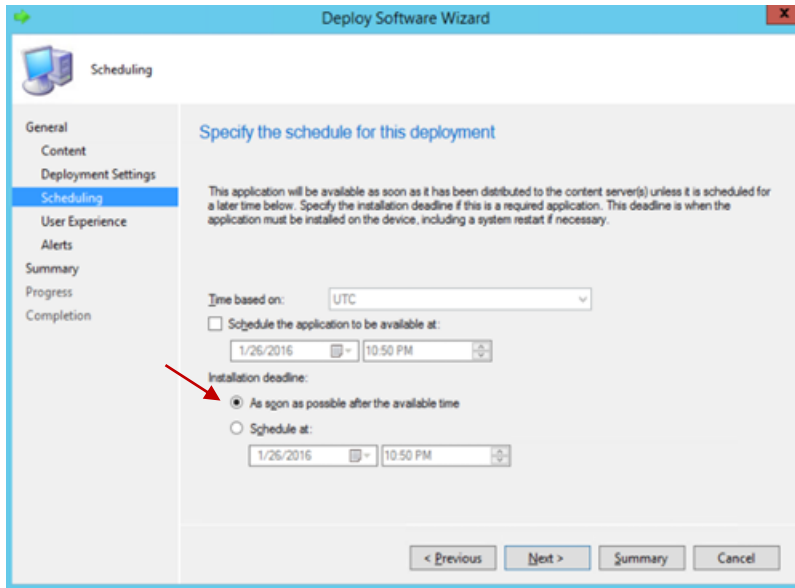


Figure 10: Schedule the installation

Step 3: Deploy the Remaining Clients

Repeat the process in [Step 2: Deploy MaxAgent](#) for the other clients (MaxSupervisor and MaxInSight).